

MULTIPANEL[®]

WALLS

ECONOMY RANGE

Recommended Tools

- Fine toothed hand saw ■
- Measuring tape ■
- Ruler ■
- Pencil ■
- High-grab adhesive ■
- Silicone Sealant & silicone gun ■
- Masking tape ■
- Power drill & screwdriver ■

INSTALLATION GUIDE

Pre-installation

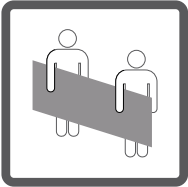

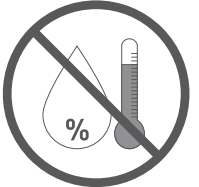
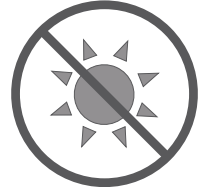

Prior to installation, Multipanel recommend that you visit our **video** section on www.multipanel.co.uk, where you will find a complete animation.

Pre-installation check-list

Checked?

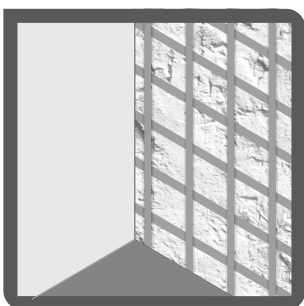
Panels are supplied with protective polycoating. This should be carefully peeled back to inspect the laminate surface, and replaced for installation.	Y / N
Inspect panels & profiles for any flaws, defects or damage.	Y / N
Check colour, pattern and sheen levels match between all panels and profiles.	Y / N
Check panels are from the same batch, as colour variation can occur between different batches. - <i>A batch number can be found on the back of each panel, as well as the outer packaging.</i>	Y / N
If panels are being fitted by a tradesman, colours should be approved by end user.	Y / N
Dry-fit tongue & grooved panels to ensure tightly butted joints will be achieved.	Y / N
Please ensure to read this guide in full before commencing installation.	Y / N
Once installation has commenced, the panels are deemed to have arrived in perfect condition – any of the above reported after installation will not be covered by your warranty.	

CONDITIONING AND STORAGE

					
Panels should always be carried by two people	Condition panels & adhesive at room temp. for 48-72 hours	Panels should not be stored in areas of high humidity	Do not store outside or leant angled against a wall	Do not store in direct sunlight	Store flat and horizontal to prevent bowing

WALL PREPARATION, HANDLING AND CUTTING

Panels can be fixed to most surfaces including tiles, concrete, plaster, plasterboard, and chipboard/plywood walls providing they are sound and flat.



Timber grounds should be applied over poor surfaces, set approximately at 60cm vertically and 80cm horizontally as appropriate.

These should be skimmed or packed off the wall as required to ensure they are all true and plumb.



To ensure your Multipanel[®] is properly bonded, ensure all surfaces to which adhesive will be applied are clean and dry.



MULTIPANEL®

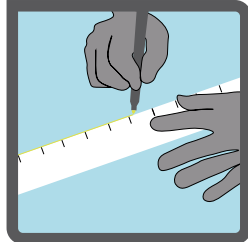
Don't tile it. Multipanel it.

WALL PREPARATION, HANDLING AND CUTTING

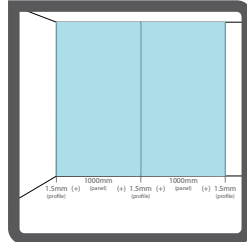


Gloves should be worn at all times when handling panels.

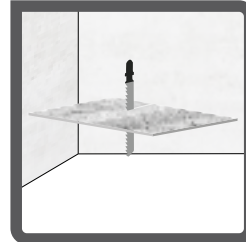
Protective eye-wear should be worn when cutting panels.



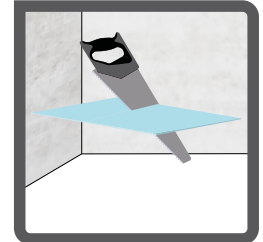
Measure and mark your required cutting line, then cut using a fine-tooth blade hand-saw, decorative face up.



Remember to allow for the thickness of the profiles when making measurements.



When using an upward cutting blade (jigsaw) or a circular saw, panels should be cut face down to avoid chipping.



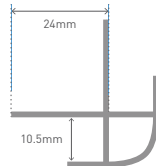
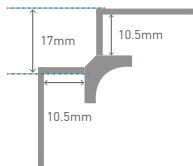
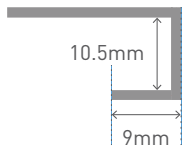
When using a fine-tooth blade hand-saw, panels should be cut decorative face up.

METAL SECTION RANGE - supplied in 2.45m lengths

Type U. End Cap

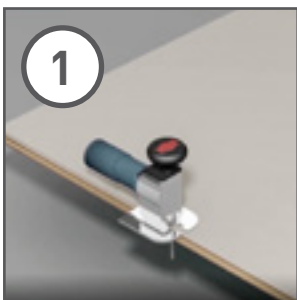
Type V. Internal Corner

Type W. External

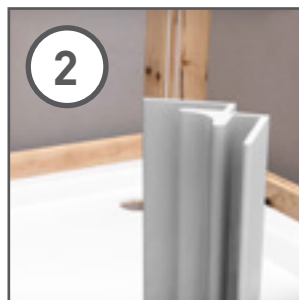


FIXING PANELS AND PROFILES

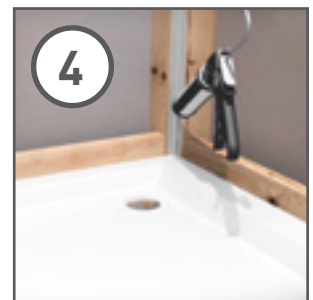
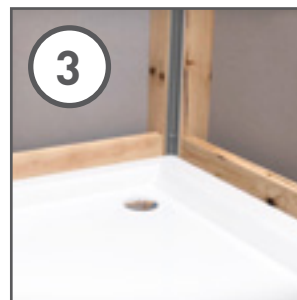
All panels must be properly sealed at all vertical edges, whether they are being attached to profiles, shower enclosures or tongue and groove. Panels must also ALWAYS be silicone sealed at the base, whether using Multipanel® Seal Kit, with or without extrusions. Inadequate sealing will invalidate your warranty. If the seal starts to deteriorate, it must be re-sealed immediately, and not allow moisture to penetrate joints or junctions.



Multipanel® Economy range is supplied with a tongue and grooved edge as standard. When fitting panels into corner and end cap profiles, the protruding tongued or grooved edge should be cut off.



The first profile – normally start with a Type V Internal Corner or Type U End Cap – This should be fixed to the wall or end grounds with high grab adhesive or countersunk screws, and a bead of silicone sealant applied to the channel.



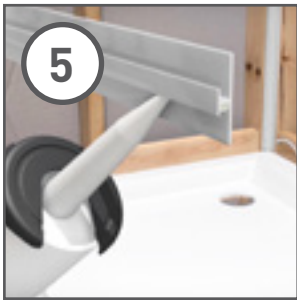
Apply silicone to the inside of the first profile.



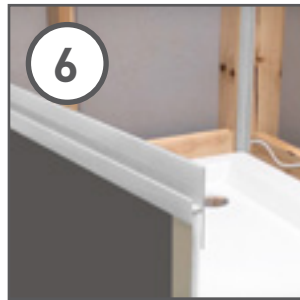
MULTIPANEL®
Don't tile it. Multipanel it.

FITTING PANELS AND PROFILES

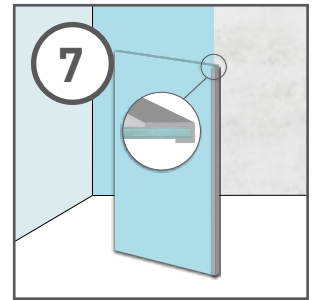
Alternatively, you can apply adhesive directly to the wall or timber framework.



Apply silicone sealant to the channel of the second profile and attach it to the long edge of the first panel.

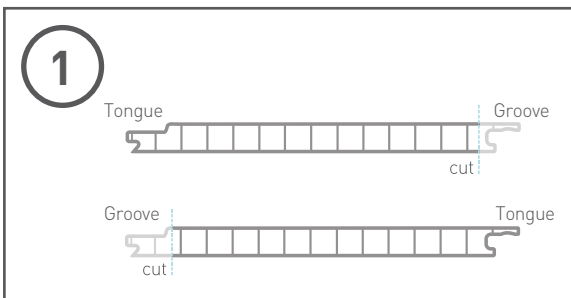


Apply adhesive to the reverse of the panel, angle into the first profile and push firmly against the wall.

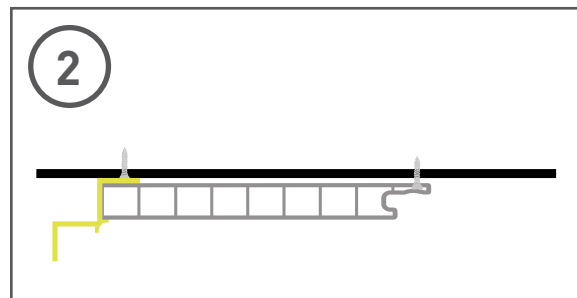


Continue the above steps to work around corners, finishing with end caps if required.

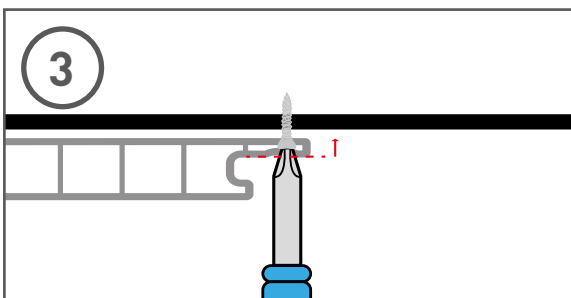
TONGUE AND GROOVE PANELS



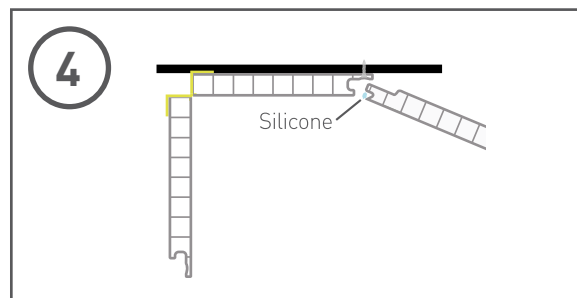
Economy panels are supplied as standard with a tongued long edge and a grooved long edge. When fitting panels into an extrusion, the protruding tongued or grooved edge should be cut off.



Bond the first panel to the wall or frame, with the grooved edge first. If screw fixing panels to the wall/frame, pilot bore the recess in the groove where screws are to be located. *(failure to pilot bore may result in the panels splitting)*. Pack between back of panel and wall as necessary to avoid distortion to the joint when screw fixing.



Fix through the back flange of the grooved edge with countersunk screws - the screw head should fit into the recess on the back of the tongue. Ensure that screws are turned until they are just under the flush to prevent any obstruction to the tongue of the next panel to be fitted.



Apply masking tape to the two meeting edges of the decorative face to protect the laminate face. Apply a narrow bead (2-3mm) of silicone sealant to the front shoulder of the tongue.

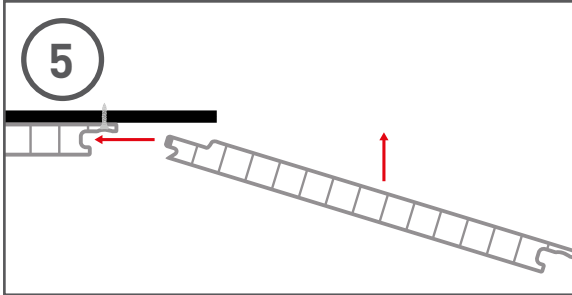
Note: Using too much silicone sealant will affect the tightness of the Hydro-lock joint. Using too little may affect water-tightness.



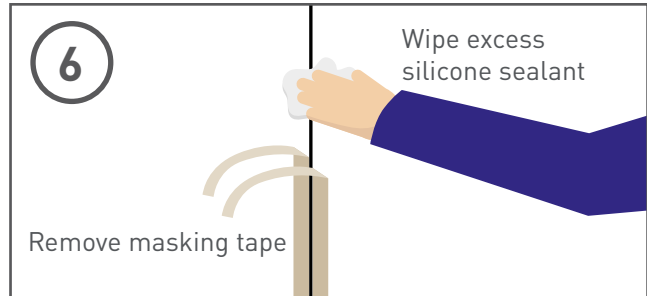
MULTIPANEL®

Don't tile it. Multipanel it.

FIXING TONGUE AND GROOVE PANELS



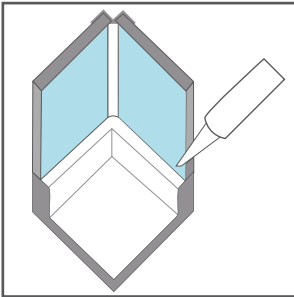
Angle the tongue of the next panel into the groove of the fixed panel.



Remove the masking tape and ensure any excess silicone sealant is wiped from the laminate face immediately.

SHOWER TRAYS AND BATHS

- Multipanel® Economy is compatible with the Multipanel® Seal Kit; the all-in-one kit for sealing the bottom edge of panels at a shower tray or bath. See separate installation guide.
- Alternatively you can fit Multipanel® Economy with a 3mm gap between the bottom of the panel and the shower tray or bath, sealing the gap with silicone sealant. (*see illustration*).



FITTING VALVES AND CONTROLS

- When cutting apertures through Multipanel® Economy, a 2mm clearance gap should be left around all edges, and sealed with silicone sealant.

ADHESIVE AND SEALANT

- Multipanel® all-in-one, High-Grab Adhesive & Sealant are available to order from your distributor or local showroom.

AFTERCARE

- Once installed, your Multipanel® Economy requires minimal maintenance. Panels should be wiped clean with soft cloth or sponge, using a mild, non-abrasive detergent.



MULTIPANEL®

Don't tile it. Multipanel it.

WARRANTY

Multipanel® offers a 1 year wear warranty that Multipanel® Economy will neither crack nor delaminate and will remain watertight if fitted and sealed in accordance with our published recommendations.

In the event of a successful claim under your Multipanel® Economy guarantee we will replace the panels, but will only cover any claims for consequential costs under exceptional circumstances where a defective panel prohibits ordinary use of the surrounding area, eg cannot take a shower.

Multipanel® High Grab Panel Adhesive must be used and is available to order from your local distributor or showroom.

This guarantee does not cover failure of the product due to:

- Faulty installation.
- Incorrect maintenance.
- Damage or misuse.
- Exposure to surface heat > 60°C.
- Exposure to direct sunlight.

Minor surface variations: Customers used to the uniform surface finish on Multipanel® Classic and Multipanel® Tile should be aware that whilst meticulous quality control checks are in place, the inherent qualities of PVC mean that Multipanel® Economy may exhibit very small black dots, tramlines or surface features which do not constitute defects.

Prior to installation the following checks should be carried out and any queries reported, as claims of this nature will not be covered after installation:

- Colour matching and sheen levels between all panels and profiles
- If panels are to be fitted by a tradesman - colours should first be approved by the customer
- All products have arrived in good condition
- Significant flaws in PVC - although unlikely. Where polycoating is applied it should be peeled back to inspect the surface and replaced for installation, this is particularly important where polycoating has text overprinted.
- Dry fit tongue & groove jointed boards prior to final installation to ensure a flush finish and tightly butted joints will be achieved.
- Check batch numbers match between different packs. Batch numbers can be found on every pack and on the reverse of each panel.

This guarantee does not confer any rights other than those set out above and claims for consequential loss or damage are excluded. This guarantee does not affect your statutory rights as a consumer.

www.multipanel.co.uk

Multipanel®, Westfield Avenue, Edinburgh, EH11 2QH

t +44(0)131 290 2862 f +44(0)131 337 9241 e info@multipanel.co.uk

Multipanel® is part of Grant Westfield Ltd.

